

# Hess Auctioneers, LLC.

1451 River Road ~ PO Box 10 ~ Marietta, PA 17547  
 Phone 1-866-511-2493 Fax 717-427-1665  
 PA Auct. Co. AY2025, AH1856, VB1159  
 Email ~ [info@hessauctioneers.com](mailto:info@hessauctioneers.com)

(Office Use Only)	
Here _____	S # _____
Tag _____	
Pictures _____	
Contract _____	

## PICKUP/PASSENGER VEHICLE SPEC SHEET

Sale Date: April 12, 2019

**\*\*Units and Titles must be submitted by 4/1/19 to be included in our 4/12/19 Auction\*\***

Note: We will advertise your vehicle through print ads/mailings/websites – the information you provide on this sheet helps us to reach as many potential buyers as possible!

Company Name: \_\_\_\_\_ Contact: \_\_\_\_\_  
 Phone # \_\_\_\_\_

Type of Vehicle: Pickup / Van / Car / RV / ATV / Golf Cart / Motorcycle / Other: \_\_\_\_\_

Year: \_\_\_\_\_ Make: \_\_\_\_\_ Model: \_\_\_\_\_ Light Duty Y/N

VIN#: \_\_\_\_\_ Ton: 1/2 3/4 1 ton 4WD Y/N SUV Y/N Dually Y/N

CAR: 2 door coupe/2WD crossover/4 door Sedan/4WD crossover/SUV

**Selling Options (check one):**  Absolute  Reserve: Reserve Amount: \$ \_\_\_\_\_

<b>OD Miles/Hours:</b>	<b>GVW (lbs):</b>	<b>Eng. Make:</b>	<b>Eng. Spec:</b>
<b>Eng. Cylinders:</b>	<b>Eng. Size:</b>	<b>Eng. HP:</b>	<b># of Passengers:</b>
<b>Fuel Type:</b>	<b># of Fuel Tanks:</b>	<b>Fuel Capacity (gal):</b>	
<b>Trans Make:</b>	<b>Trans Type:</b> (circle one) Auto Manual	<b>Trans Speed:</b>	<b>Over Drive:</b> (circle one) Yes No
<b>Cruise:</b> (circle one) Yes No	<b>Pwr Steering:</b> (circle one) Yes No	<b>Rear Spec:</b>	<b>Dually:</b> Yes No
<b>Axle Type:</b>	<b>Axle F (lbs):</b>	<b>Axle R (lbs):</b>	<b>Suspension Type:</b>
<b>Brakes:</b> (circle one) Air Air/Hyd Disk Disk/Drum Hyd	<b>Tire Size:</b>	<b>Wheel F:</b> (circle one) Alloy Alum Cast Custom Disc Spoke Steel	<b>Wheel R:</b> (circle one) Alloy Alum Cast Custom Disc Spoke Steel
<b>5<sup>th</sup> Wheel:</b> (circle one) Air Slide Manual Stationary	<b>Air Condition:</b> (circle one) Yes No	<b>Cab:</b> (circle one) Regular Extended Crew	<b>Truck Bed Length (ft):</b>
<b>Int. Color:</b>	<b>Ext. Color:</b>	<b>Power Windows:</b> (circle one) Yes No	<b>Hitch Type:</b>
<b>Length (Ft.):</b>	<b>Width (In.):</b>	<b>Height (Ft.):</b>	<b>RV Class:</b>

Additional Information about vehicle (For RVs: Please list all features (# and size of beds, kitchen appliances/entertainment/generators, all extras – this helps us to attract buyers!):

---



---



---

## Hess Auctioneers, LLC.

1451 River Road ~ PO Box 10 ~ Marietta, PA 17547  
Phone 1-866-511-2493 Fax 717-427-1665  
PA Auct. Co. AY2025, AH1856, VB1159  
Email ~ [info@hessauctioneers.com](mailto:info@hessauctioneers.com)

KEEP this Check List for  
Your Records.

### Paperwork & Photographs Needed:

**Paperwork Required: Return via fax to 717-427-1665 OR via email to: [sales@hessauctioneers.com](mailto:sales@hessauctioneers.com)**

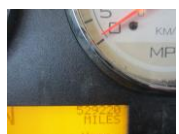
- Power of Attorney (one for each titled item being consigned):**
  - a) Must be signed in the presence of a Notary
  - b) Sign and have document notarized (we can notarize this form at no charge, please call for an appointment)
- Seller Agreement:**
  - a) Complete Page 1
  - b) Sign Page 5
  - c) Complete Page 6
- Sign Up Spec Sheet:** Please complete with **as much detail** as possible (More Info = More Sale \$\$)
- Title(s):** Please mail (we recommend mailing via Certified Mail) or drop off original title(s) to:  
Hess Auctioneers, LLC  
1451 River Road, PO Box 10  
Marietta, PA 17547

### Picture Guidelines: (Remember, a good quality picture will attract interested buyers!)

1. If at all possible, move the unit outside and away from other vehicles/buildings
2. \*\*Always hold camera or phone horizontally not vertically\*\*
3. Be sure camera is set to take pictures in a 4:3 dimension ratio (640x480 or 1600x1200)
4. Take a good, clear picture of the Front Drivers Side (angled) and submit to [info@hessauctioneers.com](mailto:info@hessauctioneers.com) by the **Brochure Deadline March 13, 2019** to be included in our auction brochure and ads.
5. Photo Examples:



6. Other pictures requested (no more than 16 pictures total) that will be displayed on our website listings:



Questions about pictures? Contact Beth at 1-866-511-2493 Ext 5 or [beth@hessauctioneers.com](mailto:beth@hessauctioneers.com)

\*\*If you'd like a HA staff member to take pictures for you, arrange to bring the unit to the Auction Site\*\*